

 **OilQuick**[®]
Automatic quick coupler systems

EXCAVATORS
CRANES
FORKLIFTS
WHEEL LOADERS

It's time to change!



OO

The intelligent quick coupler system

Change hydraulic attachments in seconds

OilQuick is an automatic quick coupler system which allows hydraulic work tools to be connected and disconnected from the drivers cab. The operator can change between various work tools within a few seconds.

OilQuick launched the world's first quick coupler system on the market in 1993. It is the most advanced technology for hydraulic quick couplers on the market today. The system is available for excavators from 1 to 132 U.S. Ton as well as cranes, forklifts and wheel loaders. The OilQuick system will help make your company more flexible, competitive and cost effective.

Always have the right attachment for the job.



Coupler function

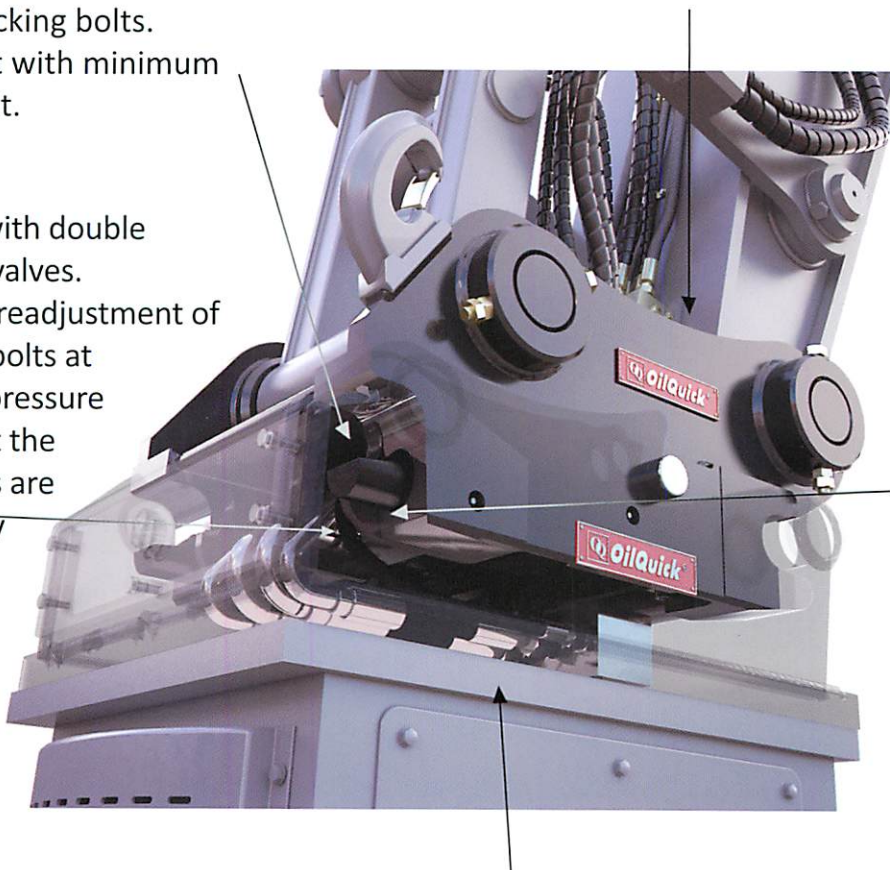
With OilQuick you can change hydraulic attachments directly from the drivers cab in just 15 seconds.



Rugged quick coupler made of high-grade steel. The mounting frame can be adjusted to fit most excavators in the weight class.

Bores for locking bolts.
Optimum fit with minimum
wedge effect.

H-cylinder with double
hose break valves.
Continuous readjustment of
the locking bolts at
full system pressure
ensures that the
attachments are
locked safely
in place.



OilQuick function.
The hose couplings
are connected
automatically and
the attachment
securely locked in
place with only
one cylinder
movement. This
enables you to
change hydraulic
tools in a matter of
seconds.

The OilQuick frame has hardened pins, bevelled inner edges, drilled holes for welded pins and enables a precision fit. This ensures connection with no play for minimum wear and long service life.

Excavators

OQ system for excavators

OilQuick quick couplers and tool adapters are of the highest quality and ensure a precision fit. The coupler locks the attachments in place at full system pressure. This ensures engagement with no play resulting in minimum wear and long service life for the coupler system.



Basic data

Model	Width (in.)	Pin distance (in.)	Weight (lbs.)	Weight of machine (T)	Max. number of hose couplings					Electrical coupling (option)
					Max	3/8"	1/2"	3/4"	1"	
OQ 45-5	11.4	16.9	187	5.5-13	5	3	2			Yes
OQ 65	17.3	20.9	375	15-24	5		2	3		Yes
OQ 70/55	21.7	23.6	507	20-31	6		2	2	2	Yes
OQ 80	23.2	26.4	705	28-44	6		2	2	2	Yes
OQ 90	29.5	29.5	1390	44-77	9	1	3	1	4	Yes
OQ 120	34.3	36.4	2646	77-132	8		3		3 2	Yes

OQC system for cranes

Developed by OilQuick, the **OQC system** provides unique advantages for contractors in material handling.

The OQC is an OilQuick suspended quick coupler, which is primarily designed for use on loading cranes and other handling equipment.

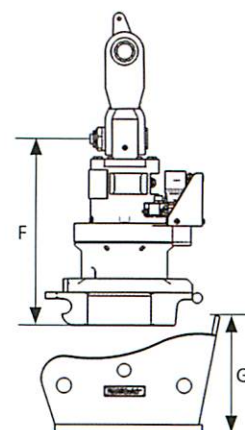
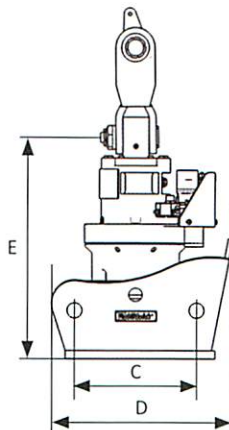
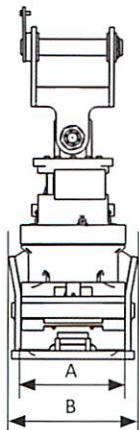
The system consists of an extremely rugged 360° rotator mounted on our fully hydraulic, tried-and-tested quick coupler. The OQC unit is suspended from the handling equipment's stick.

If required, the system can also include an electric swivel for operating lifting magnets.



Basic data

Model	Rotator	Dimensions (in.)							Weight (lbs.)			Max. lift capacity (T)
		A	B	C	D	E	F	G	Coupler	Rotator	Adapter	
OQC65	DWP15	17	23	21	31	35	34	20	487	595	469	16.5
OQC70/55	DWP26	22	30	23	37	38	36	25	771		758	28.6



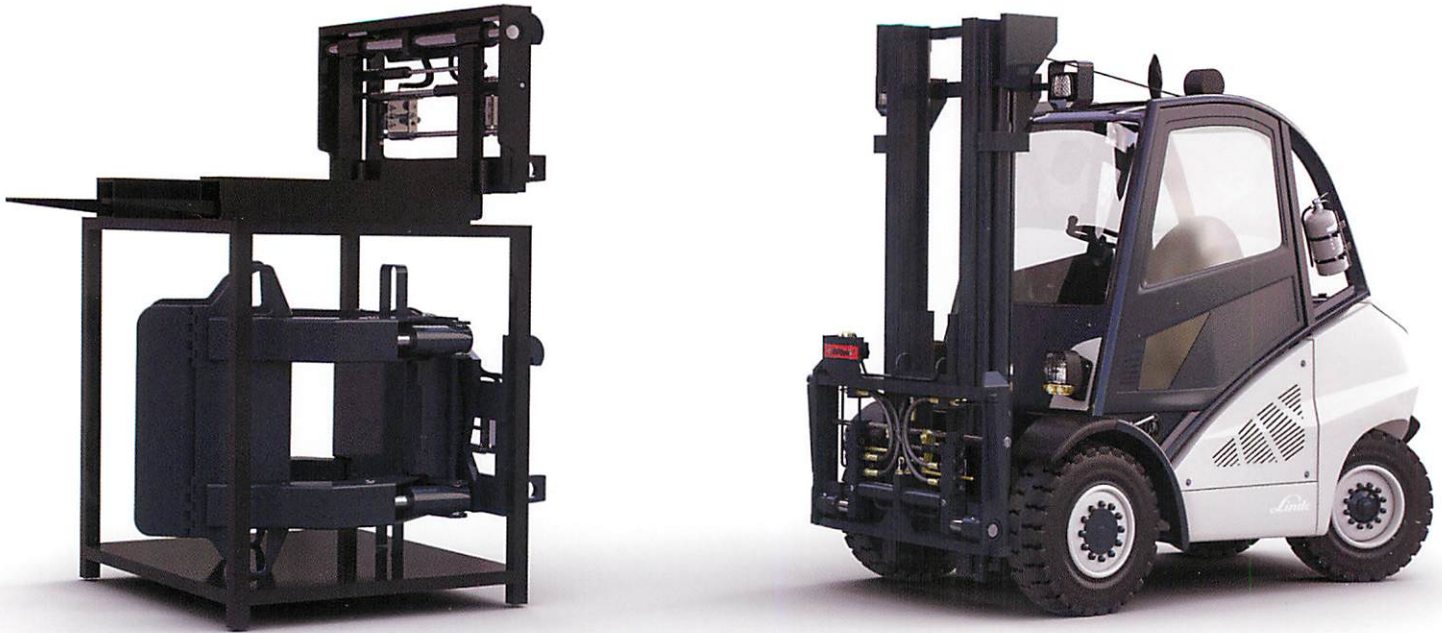
Model	Max. no. of couplings		Electrical couplings		Max. operating pressure
	1"	3/4"	High Power 250V	Control Power 24V, 10 Pole	
OQC65	-	3	Option	Option	5076 psi
OQC70/55	2	1	Option	Option	5076 psi

* Weight without grapple suspension

Forklifts

OQT system for forklift trucks

The operator can change between various work tools within a few seconds, such as pallet forks with hydraulic tine adjustment, bale clamps, rotating bale clamps.



Basic data

Type	OQT 300i	OQT 850i-SS	OQT850i-90
ISO	2A - 3A	3A - 4A	3A - 4A
Coupler Weight (lbs.)	220 - 242	242 - 286	286 - 330
Max. number of quick couplings	6	6	6
1/2" coupling	6	6	6
Electrical Coupling (optional)	Yes	Yes	Yes
Weight of machine (T)	1 - 3	3 - 5	5 - 10

Always have the right attachment for the job.

Wheel Loaders

OQL system for wheel loaders

Change tools such as log forks, high dumping buckets, pallet forks with hydraulic tine adjustment, sweepers, bale clamps, rotating bale clamps quickly from the comfort of the cab.



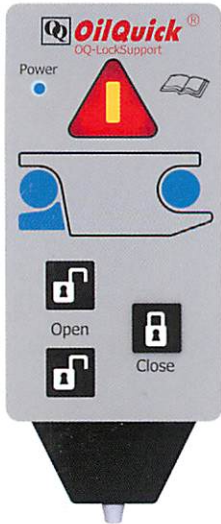
Basic data

Coupler size	OQL 310-1	OQL 310-2	OQL 310-3	OQL 410
Weight (lbs.)	595	772	948	1389
Width (in.)	46	47	47	52
Working pressure (psi)	5076	5076	5076	5076
Max. number of quick couplings	6	6	6	6
1/2" coupling	2*	2*	2*	2*
3/4" coupling	4	4	4	4
Electrical coupling, 10-pole (optional)	Left hand side	Left hand side	Left hand side	Left hand side
Weight of machine (T)	6 - 11	11 - 15	13 - 22	22 - 36

*When using an electrical coupling, one 1/2" quick coupling is replaced.

OQ LockSupport

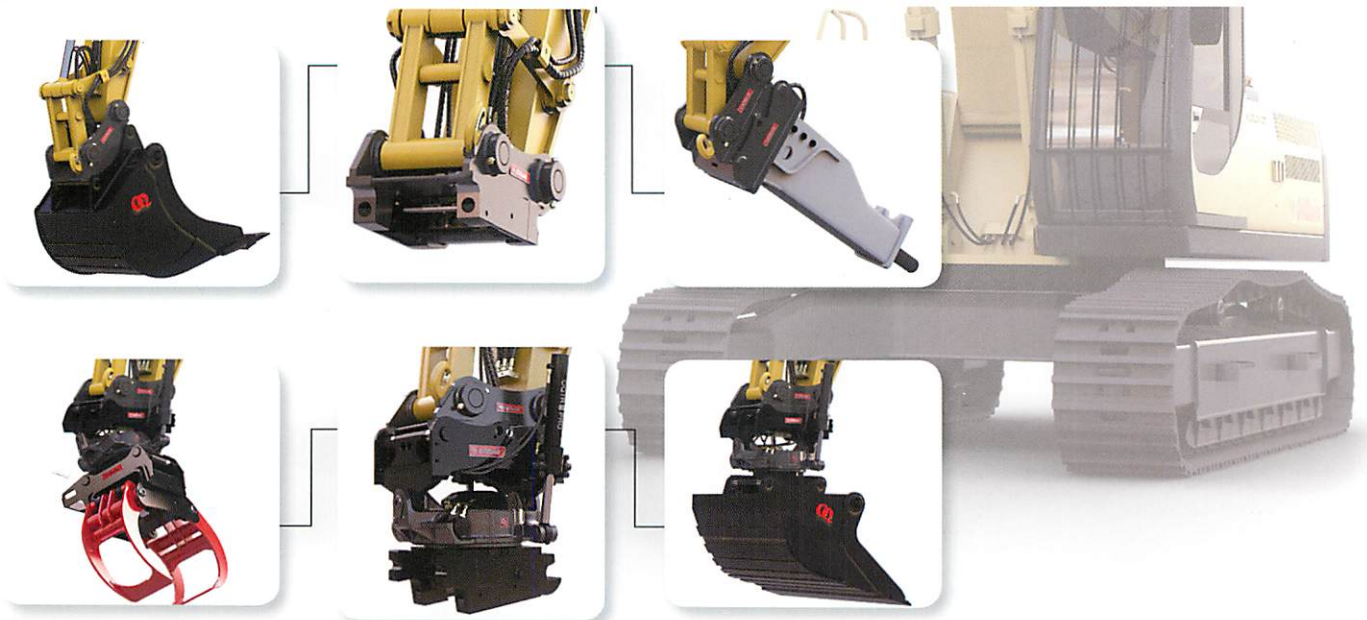
Safe tool change with OQ-LockSupport



- Electronic control and monitoring system with active scanning of the lock for safe use of work tool attachments.
- Dedicated, controlled coupling procedure.
 - The operator is guided through all the steps on the control panel.
 - Clear and user friendly.
 - Audio and visual signals in hazardous situations.
- Sensor scans the adapter pins and position of the locking cylinder.
 - The locking function is activated automatically without another hydraulic function having to be used.
- All system events are logged, with the last 32 listed in chronological order.
- Self-diagnosis function warns in the event of a system error.

OilQuick Tiltrotator

OilQuick tiltrotator is a hydraulic joint that turns your excavator into a highly versatile machine. If you mount automatic OilQuick quick couplers on top of and underneath the Tiltrotator, it not only tilts to the side and rotates for greater maneuverability but also enables you to attach hydraulic tools within a few seconds.



Dealer:



www.oilquickUSA.com